

Helping to bridge the digital divide

for people with disabilities

The “Helping to bridge the digital divide for people with disabilities” is Neil Squire’s first national survey to find out people with disabilities’ experience with Internet use and their requirements for assistive technology to support that use.

The online and telephone survey was conducted during the summer and fall of 2021, and there were

379 respondents.

Some demographics

85%

live in urban areas



65%

are women



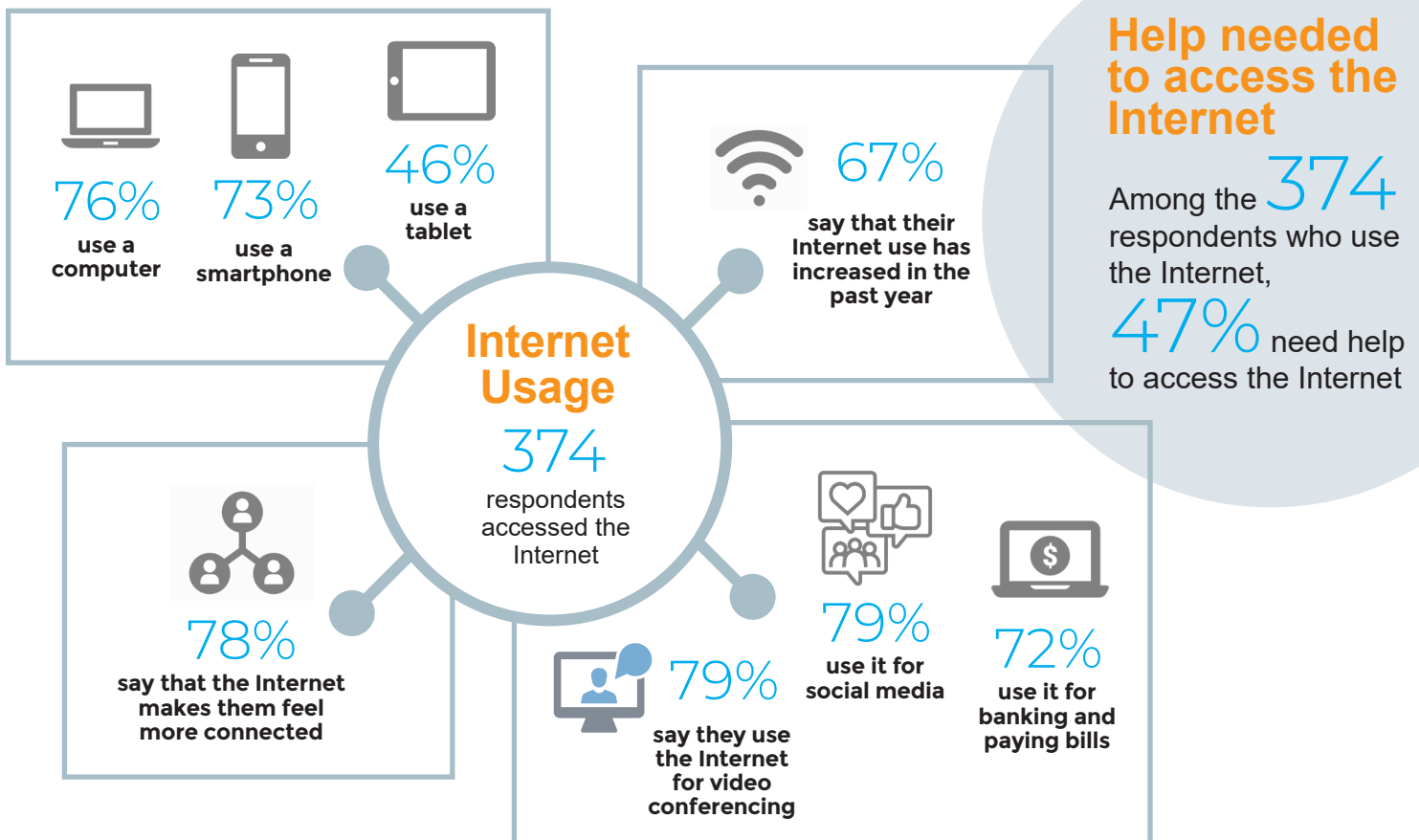
64%

have some post-secondary education



51%

are not active in the labour force

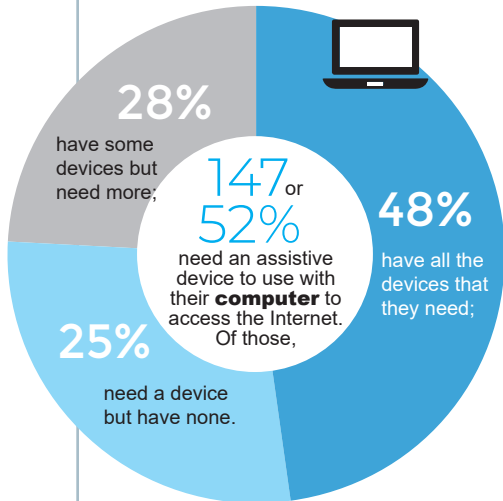




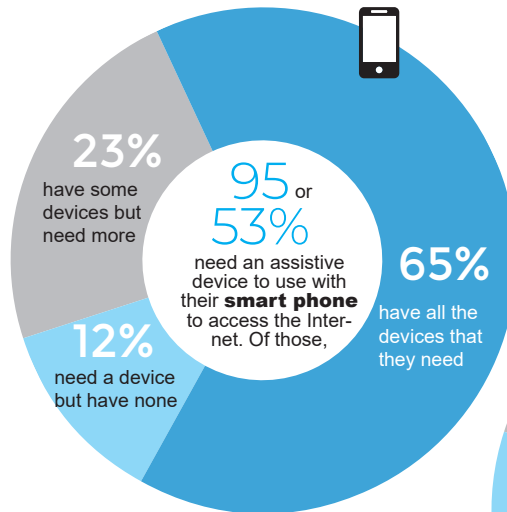
Need for Assistive devices to access the Internet



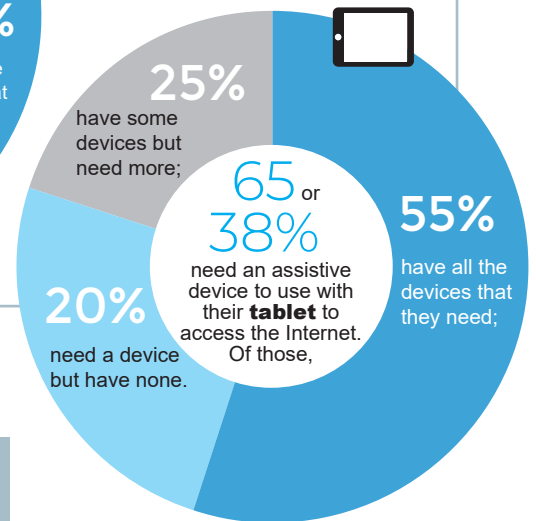
Among the **283** respondents who use a **computer** to access the Internet



Among the **273** respondents who use a **smart phone** to access the Internet



Among the **171** respondents who use a **tablet** to access the Internet



Difficulty using the Internet



104 or **28%** of respondents experience some difficulty when using the internet.

28% have difficulty searching for information

41% find it difficult to navigate the web or to find the right pages

27% have difficulty using keywords to search for information

22% say that they have difficulty because their assistive technology devices do not work with the Internet;

46% have difficulty using online services such as filling in forms or buying/ordering things

